



2010  
impact  
report



# reflections on our mission

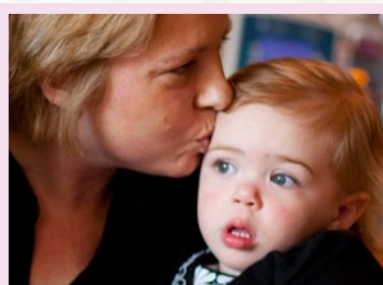
## Making fairytales come true



Megan's breast cancer journey began with diagnosis in July 2008. But, as her valiant fight was coming to an end in April 2010, our donors proved to Megan that dreams really can come true, even on the second floor of a Community Health Network hospital.

While caring for Megan, a mother of two whose terminal illness forced the cancellation of a planned family trip to Walt Disney World, Community nurses decided to blur the line between being good caregivers and being good people, and asked for our help.

Money donated to our Cancer Care Services fund was used to host a Disney-inspired "princess tea party" for our patient and her daughters, creating a transformative patient moment and a lasting memory for the children.



The morning of the party, young Katherine and Lauren were surprised with princess dresses, and Megan joined her little girls in hair and makeup preparations, just like they would have done had they been able to travel to Florida. It was a family affair, and many members of Megan's

Community "family" also attended to show their support for this exceptional patient and family experience.

**"Thank you so much to everyone at Community Health Network Foundation for making such a special day possible and creating a truly wonderful memory for our family."** – Tom, Megan's husband

While the real Walt Disney World may have been more than a thousand miles away, central Indiana donors impacted Megan's family, making a family's fairytale come true.

Just a few hours after the party ended, our friend transitioned to hospice care. One week later, she passed away.